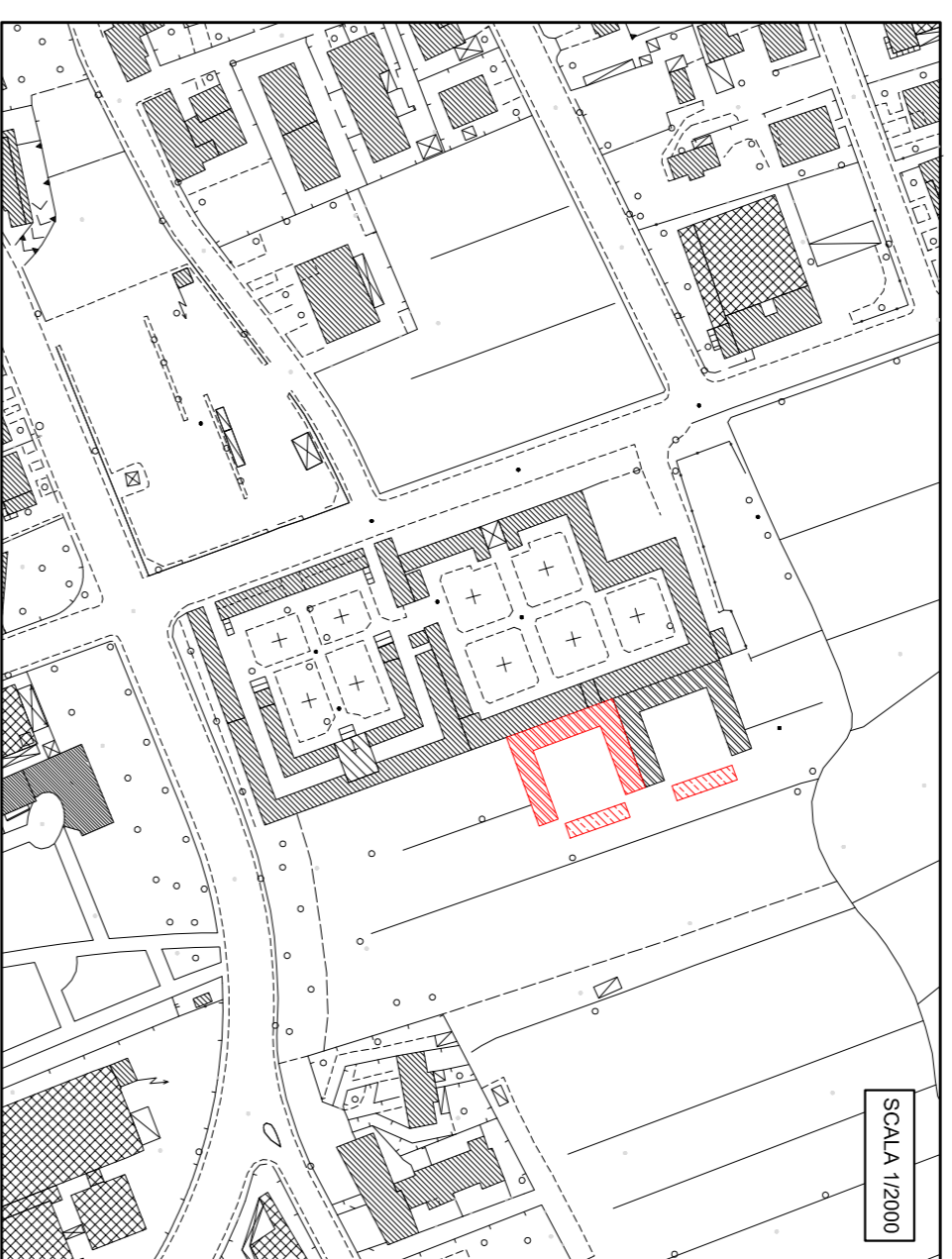




# COMUNE DI CASTELFRANCO DI SOTTO

PROVINCIA DI PISA

INDIVIDUAZIONE AREA PER NUOVE CAPPELLE GENTILIZIE  
PRESSO IL CIMITERO DI CASTELFRANCO DI SOTTO



PIANTA-PROSPETTI-PARTICOLARI

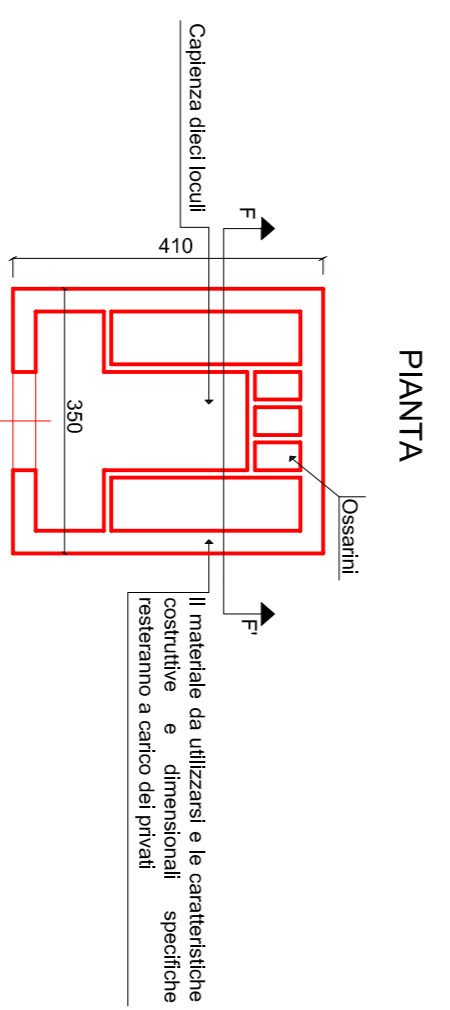
SCALA  
1/200  
1/100

IL TECNICO  
Geom. Rotonda Gianfranco

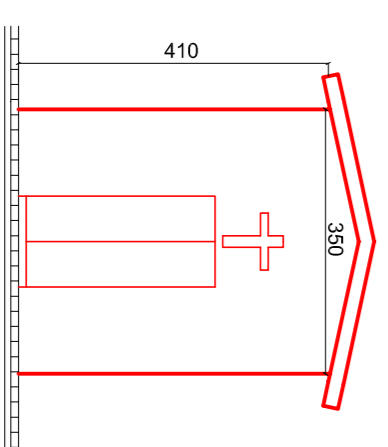
IL DISEGNATORE  
Geom. Vivaldi Tiziano

TAVOLA  
UNICA

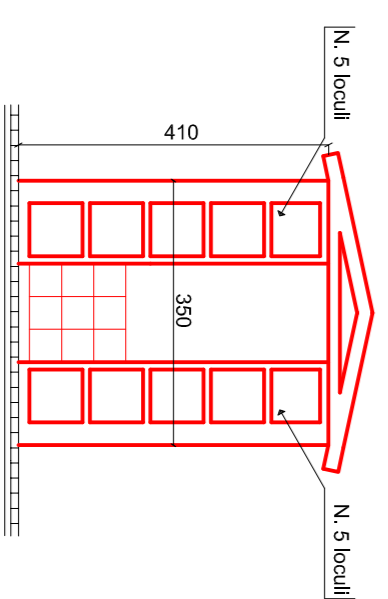
## PARTICOLARI CAPPELLA GENTILIZIA scala 1:100



PROSPETTO PRINCIPALE



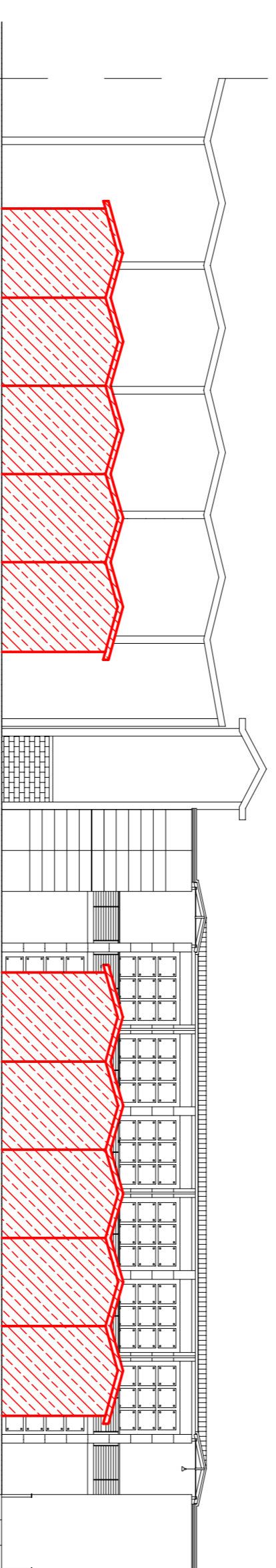
SEZIONE FF'



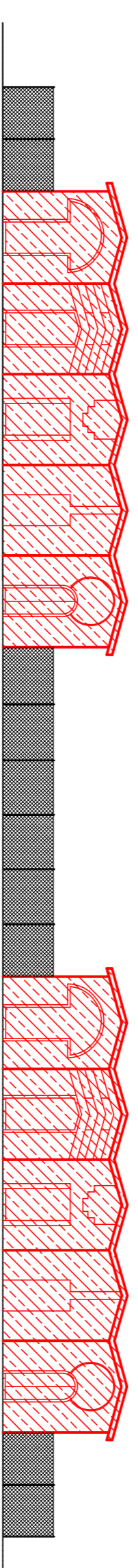
PIANTA scala 1:200



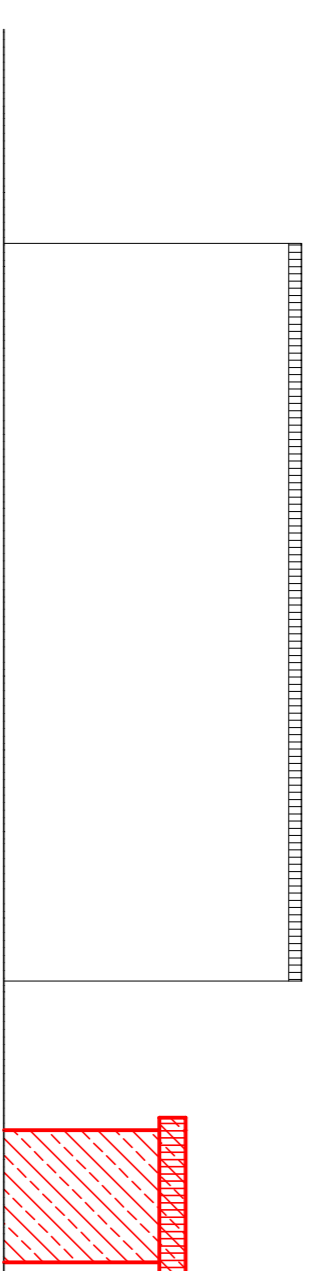
PROSPETTO AA' scala 1:200



PROSPETTO CC' scala 1:200



PROSPETTO BB' scala 1:200



PROSPETTO DD' scala 1:200

